

ALLEGRO®

29

TIFFIN MOTORHOMES



TIFFIN MOTORHOMES  
WHEREVER YOU GO, WE GO.



## 2012 ALLEGRO

**THE JOURNEY STARTS HERE.** Say hello to the 2012 Allegro, the model that put Tiffin Motorhomes on the map, and the perfect start for newcomers ready to join the fun of the RV world. Veteran RVers will find a lot to like about the Allegro too, beginning with its affordable price tag. Built to the same high standards as our top-of-the-line models, the Allegro delivers a great value, featuring quality workmanship throughout, such as the custom cabinetry built by our craftsmen in Red Bay, Alabama. It's backed by Tiffin's legendary customer service and warranty, considered the best in the industry. Our coaches are also known for efficient use of space, a necessity for life on the road, and the Allegro is no exception. Tiffin engineers have maximized every inch to ensure you can bring along anything you need. If your packing list includes children, the optional bunk beds would be a handy addition to the sleeper sofa at bedtime. Of course, you might have to flip a coin for the top bunk.

**A real crowd-pleaser.**

Everyone will feel right at home in the Allegro, courtesy of a comfortable new recliner with matching ottoman and two optional TVs with optional surround sound in the living area plus an optional TV in the bedroom. Overhead, new energy-efficient LED bulbs will brighten any occasion, while under foot is the clean look of tile throughout the coach. An optional central vacuum makes cleanup a breeze. Rich color schemes invite you to accessorize to your taste. Each comes with matching window valances, standard solid surface countertops, and solid wood cabinet faces. Last year's most popular choice, Marble, is available again, along with two new selections, French Roast and Raven. Rest assured, no one will go hungry on the road, thanks to the Allegro's galley kitchen with an 8 cubic foot refrigerator with freezer, plentiful cabinet storage, and a double bowl stainless steel sink.



34 TGA Floor Plan/Raven Interior with English Chestnut Cabinets



**CONTEMPORARY BOOTH DINETTE**

From settling in with morning coffee to relaxing after dinner with dessert, the cozy dining booth is always one of the best seats in the house.



**KITCHEN**

Stocking your pantry with family favorites is easy with the kitchen's plentiful storage space. A multitude of drawers and cabinets helps keep items organized.



### A restful stop.

Once you've hit the brakes for the day, it's time to rest and recharge in the Allegro's master bedroom. You'll appreciate how every inch of space has been put to good use, from the option of folding DVD players in the bunks to the spacious shower stall with skylight. Catch up on your favorite shows on the optional TV from the comfort of the standard queen-sized bed with innerspring mattress. Nightstands on either side of the bed and a spacious wardrobe with drawers keep personal belongings tucked away until you need them. We survey our customers every year to get their recommendations on improving each model. That means, since the Allegro has been in production for 40 years, the 2012 model is the best one yet.



34 TGA Floor Plan/Raven Interior with English Chestnut Cabinets

### BEDROOM STORAGE

Tailored to fit all your belongings, the wardrobe cabinetry is a new and improved design for 2012 based on suggestions from Allegro owners.



### FULL BATH

Prepare for the adventures of the day in the spacious bath area, featuring an enclosed shower stall molded from fiberglass by Tiffin craftsmen.





### The road calls.

From trailblazing to tailgating, the Allegro is ready to take you there, and with 128 to 183 cubic feet of under-coach storage space, it's ready to take all your stuff, too. From floor to roof, the Allegro exemplifies Tiffin's high production standards, recognized as among the best in the industry. In a 2010 survey conducted by the Recreation Vehicle Dealers Association, Tiffin's ratings substantially exceeded the industry average in design, vehicle reliability and quality, competitive price/value, dealership warranty support, and parts support. Sturdy construction delivers a tow capacity of 5,000 pounds, enabling you to bring a car or a boat along with you. Optional Halo leather bucket seats ensure both the driver and passenger have a comfortable journey. Road safety is supported with side-view cameras and a new color back-up monitor, allowing the driver to monitor the coach's movements in any direction.



Cockpit with Color Back-up Monitor and Tilt Steering Wheel

### COCKPIT DETAILS

Convenience is the key word in the Allegro's roomy cockpit, designed to put trip essentials within easy reach of the driver and passenger.



### BASEMENT STORAGE

Take everything you need along for the ride. Allegro's pass-thru storage space ranges from 128 to 183 cubic feet, with bins for luggage and traveling gear.



Gold Coral



Silver Sand



Maroon Coral



Sunlit Sand



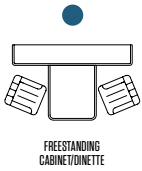
Rocky Mountain Brown

### Full-body Paint Schemes

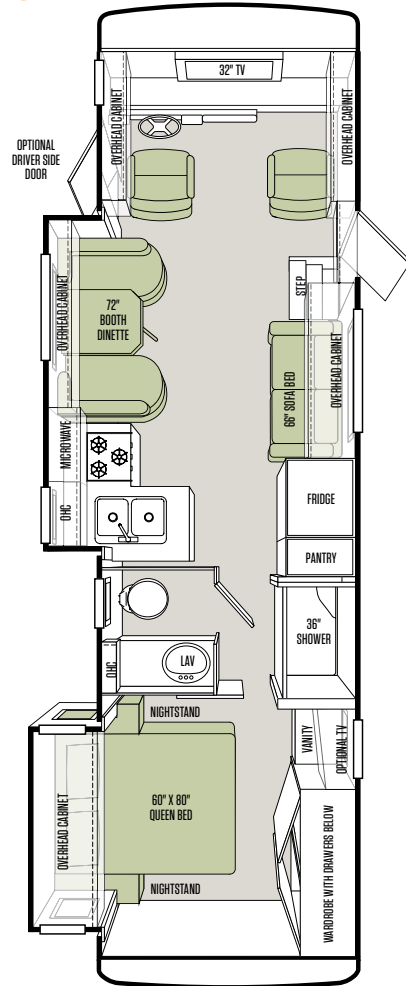
Full-body paint is standard on the 2012 Allegro, as is the protective film that seals in the paint to help retain the fresh-painted shine. Tiffin's paint facility is one of the largest in the country and features a state-of-the-art air filtration system that ensures an impeccable finish. Quality control checks are integrated into the painting process. Meticulous attention is given to every single inch of the Allegro to produce the most precise application.

## Floor Plans\* & Options

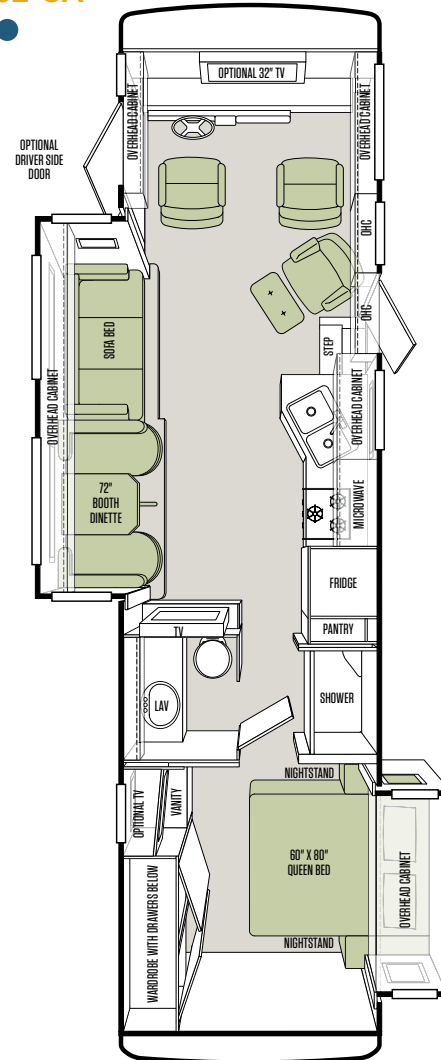
There's an Allegro floor plan perfect for how you live. That's because all Tiffin floor plans are based on ideas and recommendations from customers like you, folks who share your lifestyle needs. We actively survey owners for their suggestions on modifications that can help improve the flow and functionality of our layouts. Our engineers utilize every single inch of each plan, giving you room to roam on the inside while you roam on the outside.



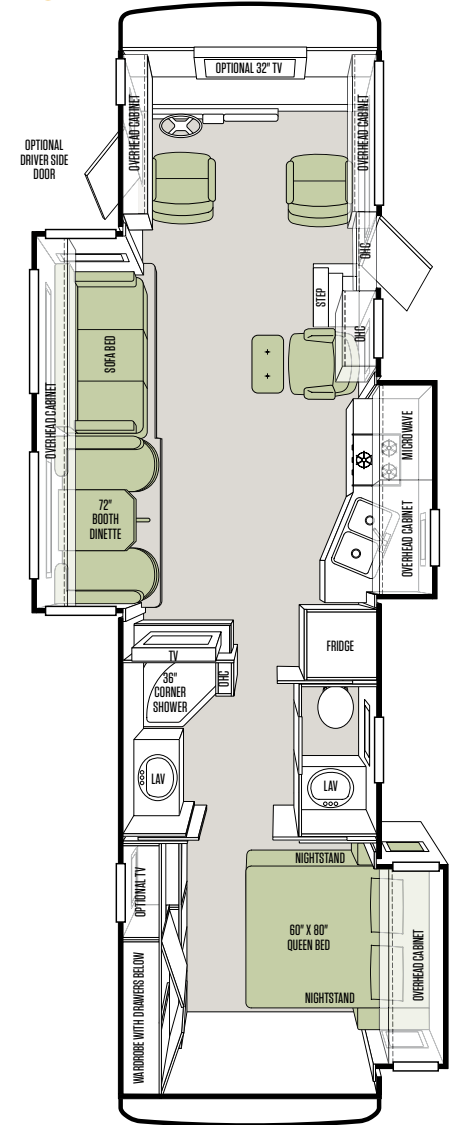
## 30 GA



## 32 CA



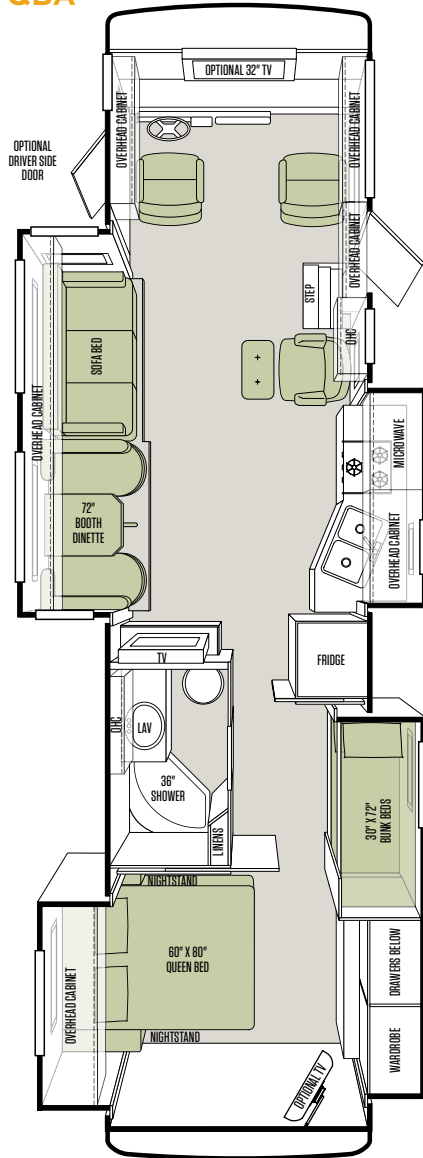
## 34 TGA



\*Additional floor plans may be added throughout the model year. For a complete and current list of available floor plans and options, visit us online at [tiffinmotorhomes.com](http://tiffinmotorhomes.com)



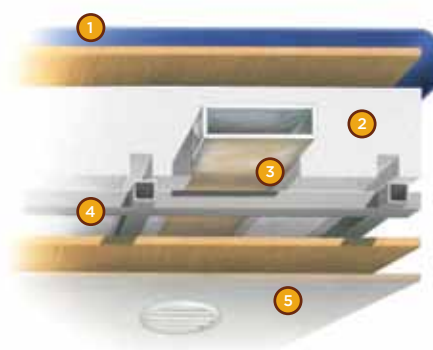
## 35 QBA



## Structural/Construction

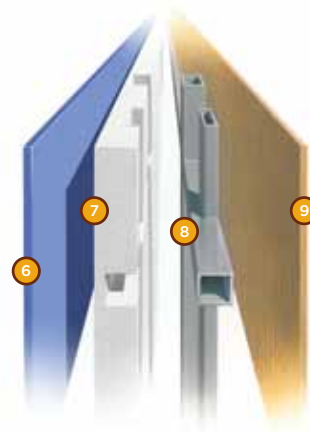
STANDARD ON ALL MODELS:

- Laminated Floor, Sidewall & Roof
- Steel/Aluminum Reinforced Structure
- One-piece Molded Fiberglass Roof Cap



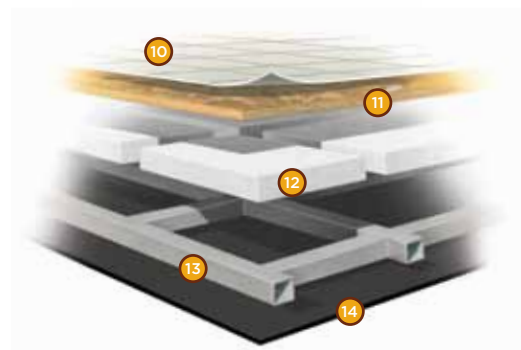
### Roof

- 1 One-piece, moisture resistant molded fiberglass roof cap provides insulation and strength and prevents water intrusion
- 2 5 1/2" formed insulation
- 3 Quiet Air Cooling System with return air and foil-wrapped cooling exhaust ducts
- 4 Durable, tubular aluminum roof skeleton
- 5 Easy-to-clean soft touch vinyl ceiling panel



### Sidewall\*

- 6 Gel-coat fiberglass outside wall panel
- 7 High-performance thermal insulation
- 8 Durable, yet lightweight, tubular aluminum wall skeleton
- 9 Decorative inside wall panel



### Floor

- 10 Vinyl tile floor bonded to high-impact oriented strand board
- 11 High-level engineered oriented strand board
- 12 High-performance thermal insulation
- 13 Durable, tubular floor skeleton
- 14 Woven moisture barrier material

\*All sidewalls are approximately 2" thick.

## Specifications

### Automotive

#### STANDARD ON ALL MODELS:

- TorqShift® 5-speed Automatic Overdrive with Tow/Haul Mode
- Cruise Control
- Emergency Start Switch

### Chassis

#### FORD CHASSIS:

|                            |                  |              |               |               |
|----------------------------|------------------|--------------|---------------|---------------|
| Engine—362 HP              | 6.8 L V 10       |              |               |               |
| Torque (Lb. — Ft. Max Net) | 457 @ 3,250      |              |               |               |
| GAWR—Front                 | 8,000 Lb.        |              |               |               |
| GAWR—Rear                  | 15,000 Lb.       |              |               |               |
| GVWR                       | 22,000 Lb.       |              |               |               |
| GCWR                       | 26,000 Lb.       |              |               |               |
| Wheel Base                 | 208" (30 GA)     | 228" (32 CA) | 242" (34 TGA) | 242" (35 QBA) |
| Tire Size                  | 235/80R22.5-GXRV |              |               |               |
| Fuel Tank (Gallons)        | 75               |              |               |               |
| Alternator Amps            | 175              |              |               |               |
| Trailer Hitch Capacity     | 5,000 Lb.        |              |               |               |

### Weights & Measures

| OVERALL:   | 30 GA   | 32 CA   | 34 TGA  | 35 QBA  |
|--|---------|---------|---------|---------|
| Overall Length (Approximate)                           | 31' 5"  | 32' 10" | 34' 10" | 35' 10" |
| Overall Height with Roof Air (Maximum)                 | 12' 10" | 12' 10" | 12' 10" | 12' 10" |
| Interior Height  | 83.5"   | 83.5"   | 83.5"   | 83.5"   |
| Overall Width  | 101"    | 101"    | 101"    | 101"    |
| Interior Width   | 96"     | 96"     | 96"     | 96"     |
| Fresh Water (Gallons)                                  | 70      | 70      | 70      | 70      |
| Black Water (Gallons)                                  | 50      | 50      | 50      | 50      |
| Grey Water (Gallons)                                   | 66      | 66      | 66      | 66      |
| LPG Tank (Gallons; can only be filled to 80% capacity) | 24      | 24      | 24      | 24      |
| Basement Storage (Cubic Feet - Approximate)            | 128     | 138     | 169     | 183     |
| Minimum Garage Height                                  | 13'     | 13'     | 13'     | 13'     |

### Exterior

#### STANDARD ON ALL MODELS:

- |  |  |   |   |
|--|--|---|---|
| <ul style="list-style-type: none"> <li>• Fiberglass Front &amp; Rear Caps</li> <li>• Fiberglass Roof Cap</li> <li>• Tinted One-piece Windshield</li> <li>• 5.5 kw Onan® Generator</li> <li>• Two 13,500 BTU High Profile Roof A/Cs (High Efficiency)</li> <li>• Quiet A/C Roof-ducted System</li> <li>• Double Electric Step</li> <li>• 1/4" Thick Single Pane Windows</li> <li>• Park Telephone Ready</li> <li>• Horizontal Mounted Wipers</li> </ul> | <ul style="list-style-type: none"> <li>• Heated Power Mirrors</li> <li>• Exterior Patio Light</li> <li>• Slide-out Awning(s)</li> <li>• Hydraulic Automatic Leveling Jacks</li> <li>• BASF Full-body Paint with Protective Film on Front Cap</li> <li>• Two 6 V Auxiliary Batteries</li> <li>• Exterior Rinse Hose/Shower</li> <li>• Water Filtration System</li> <li>• Low-point Water Drain Lines</li> <li>• Lighted Plumbing Compartment</li> </ul> | <ul style="list-style-type: none"> <li>• Convenient Access Doors with Gas Shocks</li> <li>• Ridged Long-life Storage Boxes</li> <li>• Single Handle Lockable Storage Door Latches</li> <li>• Heated Water &amp; Holding Tank Compartments</li> <li>• Digital TV Antenna</li> <li>• Cable Ready TV</li> <li>• Side-view Cameras Activated by Turn Signals</li> <li>• Power Patio Awning with Aluminum Weather Shield</li> <li>• Front Cap Rock Guard Protection</li> </ul> | <ul style="list-style-type: none"> <li>• Water Heater Bypass System</li> <li>• 50 Amp Service</li> <li>• Black Holding Tank Flush System</li> <li>• Gravity Water Fill</li> <li>• Color Back-up Monitor</li> <li>• 110 V Exterior Receptacle</li> <li>• 110 V/12 V Converter</li> <li>• Undercoating</li> <li>• Roof Ladder</li> <li>• External Tripod Satellite Hook-up</li> <li>• Lighted Basement Storage</li> </ul> |
|--|--|---|---|

| AVAILABLE OPTIONS:  | 30 GA | 32 CA | 34 TGA | 35 QBA |
|---|-------|-------|--------|--------|
| 7.0 kw Onan® Generator  | ○     | ○     | ○      | ○      |
| Automatic Satellite Dish*   | ○     | ○     | ○      | ○      |
| One 15,000 BTU High Profile Roof A/C with Heat Pump (7.0 kw Generator Only) | ○     | ○     | ○      | ○      |
| CB Antenna  | ○     | ○     | ○      | ○      |

\*High-definition programming is not available on a domed satellite antenna unless you subscribe to DISH Network®.

## Cockpit

### STANDARD ON ALL MODELS:

- Entry Floor Light
- Step Switch & 12 V Disconnect Switch
- Back-up Camera with Color Monitor
- Non-power Cloth Driver & Passenger Seats
- Lighted Instrument Panel
- CD Player & AM/FM Stereo
- Two Cupholders
- Passenger Slide Tray/Drawer
- 12 V Dash Receptacle
- Tilt Steering Wheel
- Dual Dash Fans
- Power Solar/Privacy Windshield Shades
- Manual Solar/Privacy Shades on Side Windows
- Fire Extinguisher
- Snack/Beverage Tray

| AVAILABLE OPTIONS:                          | 30 GA | 32 CA | 34 TGA | 35 QBA |
|---|-------|-------|--------|--------|
| Power Cloth Driver & Passenger Seats        | O     | O     | O      | O      |
| Power Halo Leather Driver & Passenger Seats | O     | O     | O      | O      |
| Driver Door with Power Window               | O     | O     | O      | O      |
| Front Overhead TV                           | S     | O     | O      | O      |

## Living Area/Dinette

### STANDARD ON ALL MODELS:

- Contemporary Booth Dinette with Large Pullout Storage Drawers
- Cloth DE Sofa/Sleeper
- Decorative Wall Art on Certain Floor Plans

| AVAILABLE OPTIONS:                                       | 30 GA | 32 CA | 34 TGA | 35 QBA |
|--|-------|-------|--------|--------|
| Recliner & Ottoman                                       | NA    | S     | S      | S      |
| Halo Leather DE Sofa/Sleeper                             | O     | O     | O      | O      |
| Cloth Air Coil Hide-A-Bed Sofa/Sleeper                   | NA    | O     | O      | O      |
| Halo Leather Air Coil Hide-A-Bed Sofa/Sleeper            | NA    | O     | O      | O      |
| Freestanding Dinette with Cabinets                       | NA    | O     | O      | O      |
| Midsection TV in Entertainment Center                    | NA    | S     | S      | S      |
| Home Theater Surround Sound System (Includes DVD Player) | O     | O     | O      | O      |
| DVD Player (NA with Surround Sound Option)               | O     | O     | O      | O      |

## Kitchen

### STANDARD EQUIPMENT ON ALL MODELS:

- Single Lever Bronze Sink Faucet
- Spray Rinser at Sink Faucet
- Under Counter Mount Double Bowl Stainless Steel Sink
- Solid Surface Kitchen Countertops
- 3-burner Recessed Cooktop with Solid Surface Covers
- Gas Oven
- Microwave with Exterior Venting
- Gas/Electric 8 Cubic Foot Refrigerator/Freezer

| AVAILABLE OPTIONS:             | 30 GA | 32 CA | 34 TGA | 35 QBA |
|--------------------------------|-------|-------|--------|--------|
| Convection Microwave           | O     | O     | O      | O      |
| Icemaker in Freezer            | O     | O     | O      | O      |
| Solid Wood Refrigerator Panels | O     | O     | O      | O      |

## Bath

### STANDARD EQUIPMENT ON ALL MODELS:

- Medicine Cabinet
- Skylight in Shower
- Water Pump Switch
- Fantastic® Fan with Wall Switch (Water Closet Only)
- Molded Fiberglass One-piece Shower
- Bronze Vanity Faucet

## Bedroom

### STANDARD EQUIPMENT ON ALL MODELS:

- Wardrobe with Automatic Light
- Bed Comforter with Throw Pillows
- Innerspring Queen Mattress (60" x 80")
- Lift Bed with Full Storage
- Tile Flooring
- Solar/Privacy RollEase® Shades

| AVAILABLE OPTIONS:                     | 30 GA | 32 CA | 34 TGA | 35 QBA |
|--|-------|-------|--------|--------|
| TV                                     | O     | O     | O      | O      |
| Bunk Beds (30" x 72") with Bunk Ladder | NA    | NA    | NA     | S      |
| DVD Monitors in Bunk Beds              | NA    | NA    | NA     | O      |

## Interior

### STANDARD EQUIPMENT ON ALL MODELS:

- High Gloss Raised Panel Hardwood Cabinet Doors
- Soft Touch Vinyl Ceiling
- Solid Wood Cabinet Faces
- Ball Bearing Drawer Slides
- Wall-to-wall Vinyl Tile Flooring Throughout Coach
- LED Bulbs in Ceiling Lights Only
- Scotchgard® Treated Fabrics
- Solar/Privacy RollEase® Shades
- Power Fantastic® Fans
- Tank Level Monitor System
- Smoke Detector
- 6-gallon DSI Gas/Electric Water Heater
- Carbon Monoxide Detector
- LPG Leak Detector

| AVAILABLE OPTIONS:                                   | 30 GA | 32 CA | 34 TGA | 35 QBA |
|--|-------|-------|--------|--------|
| Central Vacuum Cleaner                               | O     | O     | O      | O      |
| One 30,000 BTU Ducted Furnace                        | S     | NA    | NA     | NA     |
| Two 30,000 BTU Ducted Furnaces                       | NA    | NA    | S      | S      |
| One 35,000 BTU Ducted Furnace                        | NA    | S     | NA     | NA     |
| Cherry Bark Solid Cabinet Doors & Drawer Fronts      | O     | O     | O      | O      |
| English Chestnut Solid Cabinet Doors & Drawer Fronts | O     | O     | O      | O      |
| Medium Alderwood Solid Cabinet Doors & Drawer Fronts | O     | O     | O      | O      |

All options may not be available in every model. Because of progressive improvements, specifications, standard & optional equipment are subject to change without notice or obligation. For a complete and up-to-date list of available options and specifications, visit [tiffinmotorhomes.com](http://tiffinmotorhomes.com)

## Interior Décor

As attractive as Tiffin coaches are on the outside, the interior is where we excel. And the Allegro is no exception. Our interior designers have put together a selection of neutral color schemes to suit many decorating styles. Each option beautifully complements the tones found in the decorative accents and hardwood cabinetry handcrafted in our Red Bay mill shop and will certainly enhance your personal decorative touches.

### Cabinets



Medium Alderwood



English Chestnut



Cherry Bark

### Flooring & Countertops



Carpet

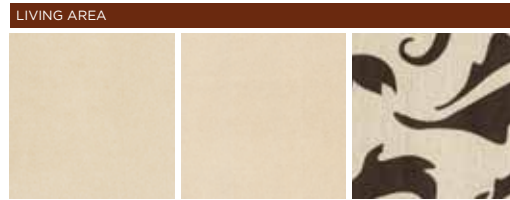


Tile



Countertop

### French Roast Fabric Suite

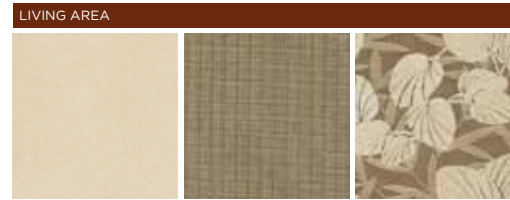


Sofa

Accent

Dinette

### Marble Fabric Suite

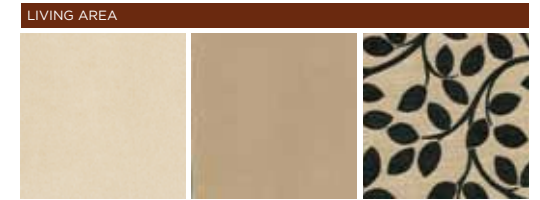


Sofa

Accent

Dinette

### Raven Fabric Suite



Sofa

Accent

Dinette



Main

Accent



Main

Accent



Main

Accent

Alllegro cabinet doors are made of solid wood, and all cabinet finishes are available in combination with any fabric suite. All options may not be available in every model. Because of progressive improvements, specifications, standard & optional equipment are subject to change without notice or obligation. For a complete and up-to-date list of available options and specifications, visit [tiffinmotorhomes.com](http://tiffinmotorhomes.com)

ALLEGRO

## Why buy a Tiffin Motorhome?

Every company under the sun talks about quality. For some, that's all it is—talk. Unlike our competitors, Tiffin Motorhomes produces many of our own parts. Not only does this give us complete control over quality, it enables us to later provide replacement parts for older models. That means, on a Tiffin coach, Tiffin craftsmen also manufactured the windows, moldings, fiberglass, textiles, finishes, millwork, custom cabinetry, and, on some models, the chassis. Building the best motor homes in the industry is our goal, and keeping a close eye on quality is always one way you can count on us to deliver.

### 10-YEAR LIMITED FRAME WARRANTY

We warranty the frame of the walls, floors, and roof for 10 years.

### 5-YEAR LIMITED SIDEWALL BOND WARRANTY

We warranty the sidewall against delamination between the outside fiberglass and the inner frame for 5 years.

### tiffinmotorhomes.com

Visit us on the web for more information on the 2012 Allegro and all of our 2012 Tiffin Motorhomes, as well as the latest product and specification updates. Plus, watch videos and see other exclusive web content.

FOR PARTS & SERVICE CALL 256/356.0261

YOUR LOCAL TIFFIN DEALER:

TIFFIN MOTORHOMES



**This year, Tiffin Motorhomes proudly celebrates** our 40th year of building the finest motor homes on the road. What an amazing ride we've had—and are still having. Thanks to everyone who has been a part of our journey, from our dedicated team to our wonderful customers. We sure couldn't have done it without you. Fasten your seatbelts, everybody, and let's get going to make it another 40 years!

Safe travels,

**Bob Tiffin**

President/Founder



SOME INTERIOR FURNISHINGS NOT INCLUDED. UNLESS WHERE NOTED, ALL CONTENT ©2011 TIFFIN MOTORHOMES, INC. ALLEGRO®, ALLEGRO BREEZE®, ALLEGRO RED®, PHAETON®, ALLEGRO BUS®, ZEPHYR®, ROUGHING IT SMOOTHLY®, OPEN ROAD®, POWERGLIDE®, AND PUSHER® ARE REGISTERED TRADEMARKS OF TIFFIN MOTORHOMES, INC. ALL RIGHTS RESERVED.

105 2ND STREET NW, RED BAY, ALABAMA 35582  
CALL 256/356.8661 FAX 256/356.8219

